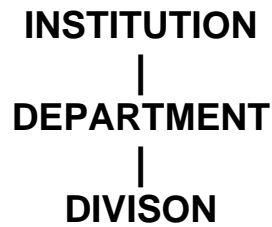


# **BLADEN COMMUNITY COLLEGE**

## **PROGRAM OUTCOMES AND ASSESSMENT RECORD 2006-2007**

**Business Administration/Curriculum  
DEPARTMENT/DIVISION**

## MISSION STATEMENT LINKAGE



### INSTITUTIONAL MISSION STATEMENT

Bladen Community College is dedicated to the educational and cultural enrichment of the people of Bladen and surrounding counties. The college operates as a constituent to the North Carolina Community College system and is committed to opening the door to opportunity for citizens seeking to improve their lives and well being by providing:

- Education, training, and retraining for the workforce, including basic skills, literacy, occupational, and college transfer programs;
- Support for economic development through services to business and industry; and
- Services which improve the quality of life for individuals and for our community.

### DEPARTMENTAL MISSION STATEMENT Business Administration

The Business Administration Department shall provide quality curriculum programs to meet the existing and changing needs of students, the community, industry, local government, and all citizens who look to Bladen Community College for lifelong learning opportunities.

## **DIVISION MISSION STATEMENT**

### **DIVISIONAL MISSION STATEMENT**

The Curriculum Instruction Planning Unit shall provide quality curriculum programs to meet the existing and changing needs of students, the community, industry, local government, and all citizens who look to Bladen Community College for lifelong learning opportunities.

The Curriculum Instruction Planning Unit shall encourage curriculum faculty to continually upgrade their professional development and maintain new techniques and technologies in their respective areas of expertise on a continuing basis in order to provide effective and innovative instruction via a variety of delivery methods.

The Curriculum Instruction Planning Unit shall provide quality of associate degree, diploma, and certificate programs upon which individuals can build, expand, or complete their educational goals toward careers in business, industry, public, and health services.

The Curriculum Instruction Planning Unit shall foster personal growth and life enrichment in students through classroom instruction and academic and job placement advising and shall prepare them to be better citizens in their communities.

The Curriculum Instruction Planning Unit shall provide its members opportunities for input on planning and future curriculum instruction personnel, facilities, curriculum programs, equipment and supply needs to meet the expected educational goals of the college.

The Curriculum Instruction Planning Unit shall foster diversity and cultural understanding among its members' interactions and curricular and extracurricular activities.

The Curriculum Instruction Planning Unit shall promote a positive and professional image of the college and shall support the mission of Bladen Community College and of the North Carolina Community College System.

## Program Outcomes

**PO#1:** Upon completion of the Business Administration graduates of Business Administration will be will be employed and/or furthering their education.

**PO #2:** Graduates of Business Administration will rate the overall quality of the college.

**PO #3:** Employers of Business Administration graduates will rate the technical and academic skills of the graduates as satisfied or very satisfied.

### **Related to Institutional goal(s):**

1. To provide effective instruction to all who enroll; through curricula and programs that reflect existing and future needs within the assigned area of instruction.
2. To provide a two-year college transfer program leading to an Associate in Arts Degree.
3. To provide Associate in Applied Science degree, diploma, and certificate curriculum programs to prepare individuals for employment or to provide skills upgrading or retraining for individuals already in the workforce.
4. To provide occupational, general and specific interest courses that meet adult educational and community service needs.

**Person responsible:** Department Chair, & Faculty

**Equipment cost:** \$ N/A

**Salaries:** \$ N/A

**Other cost:** \$ N/A

## ASSESSMENT SHEET

**Program Outcome#1:** Graduates of the Business Administration will be employed and/or furthering their education.

### ASSESSMENT METHOD (Method of Evaluation)

- The placement office will conduct a survey by contacting graduates
- The faculty in each department will also help collect this information

### CRITERIA FOR SUCCESS (Successful Indicators)

- 50% of the responding 2006-2007 graduates surveyed will report employment and /or furthering their education.

### ASSESSMENT RESULTS (Findings)

- 94% of the students were employed or furthering their education.

### USE OF RESULTS (Improvements or any actions taken based on results)

- 50% employment rate was met. No action required. This outcome will be assessed annually.

## ASSESSMENT SHEET

**Program Outcome #2:** Graduates of Business Administration will rate the overall quality of the college.

### ASSESSMENT METHOD (Method of Evaluation)

- At the end of the program, students will be given a completer survey by the planning department on the overall satisfaction of the college.

### CRITERIA FOR SUCCESS (Successful Indicators)

- 80% of the students will rate the overall quality of the college as satisfied or very satisfied.

### ASSESSMENT RESULTS (Findings)

- 97% of the students were satisfied or very satisfied.

### USE OF RESULTS (Improvements or any actions taken based on results)

- No action required. This outcome will be assessed annually.

## ASSESSMENT SHEET

**Program outcome #3:** Employers of Business Administration graduates will rate the technical and academic skill of the graduates as satisfied or very satisfied.

### ASSESSMENT METHOD (Method of Evaluation)

- The Employer Survey administered annually by the IE office will be used to collect employer satisfaction data.
- Business Administration faculty will survey the Business Technology Advisory Committee members regarding their satisfaction with business graduates they have hired.

### CRITERIA FOR SUCCESS (Successful Indicators)

- Employers will answer survey questions as “satisfied” or “very satisfied”, however, if any of the survey questions are rated as dissatisfied or very dissatisfied, that course area performance will be evaluated further.
- 80% of the employers and advisory members will indicated on the survey that they would employ future graduates of Business Administrations.

### ASSESSMENT RESULTS (Findings)

- Five of the questions on the survey were rated 100% satisfied or very satisfied. Three questions were rated 90% satisfied or very satisfied.
- 100% of the advisory members indicated they would employ future graduates of Business Administration.

### USE OF RESULTS (Improvements or any actions taken based on results)

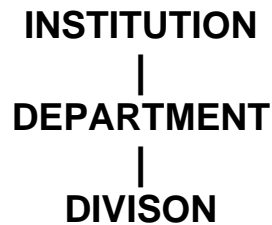
- More emphasis will be placed on written communication and problem solving skills.
- No action taken, but advisory members will be surveyed annually to track their satisfaction with graduates.

# **BLADEN COMMUNITY COLLEGE**

## **PROGRAM OUTCOMES AND ASSESSMENT RECORD 2006-2007**

**Associate Degree Nursing/Curriculum  
DEPARTMENT/DIVISION**

## MISSION STATEMENT LINKAGE



### INSTITUTIONAL MISSION STATEMENT

Bladen Community College is dedicated to the educational and cultural enrichment of the people of Bladen and surrounding counties. The college operates as a constituent to the North Carolina Community College system and is committed to opening the door to opportunity for citizens seeking to improve their lives and well being by providing:

- Education, training, and retraining for the workforce, including basic skills, literacy, occupational, and college transfer programs;
- Support for economic development through services to business and industry; and
- Services which improve the quality of life for individuals and for our community.

### DEPARTMENTAL MISSION STATEMENT Associate Degree Nursing

Consistent with the mission of Bladen Community College, the Associate Degree Nursing Program is dedicated to provide quality undergraduate education which prepares qualified students for professional nursing practice in multiple structured, culturally diverse, health care settings. The curriculum is based on liberal arts and biological sciences, and integrates professional nursing concepts and clinical experiences.

Nursing faculty strive to provide a learning environment which promotes active participation, a spirit of inquiry, self-development, and sound, knowledge-based decision-making. Integral to goal attainment of the Associate Degree Nursing Program is the continuing development of alliances in the community which strengthen the College's mission to provide services which improve the quality of life for individuals and for the surrounding community.

## **DIVISION MISSION STATEMENT**

### **DIVISIONAL MISSION STATEMENT**

The Curriculum Instruction Planning Unit shall provide quality curriculum programs to meet the existing and changing needs of students, the community, industry, local government, and all citizens who look to Bladen Community College for lifelong learning opportunities.

The Curriculum Instruction Planning Unit shall encourage curriculum faculty to continually upgrade their professional development and maintain new techniques and technologies in their respective areas of expertise on a continuing basis in order to provide effective and innovative instruction via a variety of delivery methods.

The Curriculum Instruction Planning Unit shall provide quality of associate degree, diploma, and certificate programs upon which individuals can build, expand, or complete their educational goals toward careers in business, industry, public, and health services.

The Curriculum Instruction Planning Unit shall foster personal growth and life enrichment in students through classroom instruction and academic and job placement advising and shall prepare them to be better citizens in their communities.

The Curriculum Instruction Planning Unit shall provide its members opportunities for input on planning and future curriculum instruction personnel, facilities, curriculum programs, equipment and supply needs to meet the expected educational goals of the college.

The Curriculum Instruction Planning Unit shall foster diversity and cultural understanding among its members' interactions and curricular and extracurricular activities.

The Curriculum Instruction Planning Unit shall promote a positive and professional image of the college and shall support the mission of Bladen Community College and of the North Carolina Community College System.

## Program Outcomes

1. BCC graduates will successfully pass the NCLEX-RN on the first attempt.
2. BCC ADN graduates will be employed in the field of nursing within six months of graduation.
3. BCC ADN program will maintain full approval of the NC Board of Nursing as outlined by the NC BON educational standards.

### **Related to Institutional goal(s):**

- To provide effective instruction to all who enroll through curricula and programs that reflect existing and future needs within the assigned area of instruction.
- To provide occupational, general and specific interest courses that meet adult educational and community service needs.

**Person responsible:** ADN director and faculty

**Equipment cost:** \$

**Salaries:** \$

**Other cost:** \$

## ASSESSMENT SHEET

**Program Outcome#1:** BCC ADN graduates will successfully pass the NCLEX-RN on the first attempt.

### ASSESSMENT METHOD (Method of Evaluation)

- The North Carolina Board of Nursing maintains pass rates on the National Council Licensure Exam for Practical Nurses (NCLEX-PN) from each educational program.

### CRITERIA FOR SUCCESS (Successful Indicators)

- Pass rates will be at or above 95% of the national average for NCLEX-RN

### ASSESSMENT RESULTS (Findings)

- The Bladen Community College Associate Degree Nursing Program had an 81% pass rate for the NCLEX-RN for the 2007-2008 academic year.
- (Ninety five percent of the national average pass rate for 2007 is 81%)

### USE OF RESULTS (Improvements or any actions taken based on results)

- Will continue to monitor and update as necessary.

## ASSESSMENT SHEET

**Program Outcome #2:** BCC ADN graduates will be employed in the field of nursing within six months of graduation.

### ASSESSMENT METHOD (Method of Evaluation)

- BCC Student Services staff surveys graduates to assess employment rates after graduation.

### CRITERIA FOR SUCCESS (Successful Indicators)

- Ninety percent of graduates will be employed in the health care field.

### ASSESSMENT RESULTS (Findings)

- ADN graduates were at a 94% employment rate, with 81% employed in the field.
- The students not employed were furthering their education.

### USE OF RESULTS (Improvements or any actions taken based on results)

- Will continue to monitor. The ADN faculty will offer more opportunities for interested employers to visit with graduates during the last semester.

## ASSESSMENT SHEET

**Program outcome #3:** BCC ADN program will maintain full approval of the NC Board of Nursing as outlined by the NCBON educational standards.

### ASSESSMENT METHOD (Method of Evaluation)

- The NC Board of Nursing shall review approved programs at least every eight years as specified in G.S. 90-171.40.
- The NCBON requires an Annual Report to assess progress of each educational program.

### CRITERIA FOR SUCCESS (Successful Indicators)

- If the Board determines that a program has complied with the education rules, the program shall be continued on Full Approval status.

### ASSESSMENT RESULTS (Findings)

- The Associate Degree Nursing Program is currently in compliance with the NC Board of Nursing

### USE OF RESULTS (Improvements or any actions taken based on results)

- No action required. Will continue to monitor.

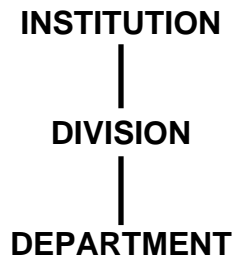
# **BLADEN COMMUNITY COLLEGE**

## **PROGRAM OUTCOMES AND ASSESSMENT RECORD**

**2006-2007**

**Curriculum/Cosmetology  
DEPARTMENT/DIVISION**

## MISSION STATEMENT LINKAGE



### **BLADEN COMMUNITY COLLEGE** **Institutional Mission Statement**

Bladen Community College is dedicated to the educational and cultural enrichment of the people of Bladen and surrounding counties. The college operates as a constituent institution to the North Carolina Community College System and is committed to opening the door to opportunity for citizens seeking to improve their lives and well being by providing:

- education, training, and retraining for the workplace, including basic skills, literacy, occupational, and college transfer programs;
- support for economic development through services to business, and industry; and
- services which improve the quality of life for individuals and for our community.

**DIVISIONAL MISSION STATEMENT  
COSMETOLOGY**

The mission of Bladen Community College's Cosmetology Department is to provide education and training in Cosmetology and related areas that will arm the graduates/students with the needed skills and abilities to be competitive in entry-level positions.

**DIVISION AND DEPARTMENT MISSION STATEMENTS**

**DEPARTMENTAL MISSION STATEMENT  
CURRICULUM DEPARTMENT**

The Curriculum Instruction Planning Unit shall provide quality curriculum programs to meet the existing and changing needs of students, the community, industry, local government, and all citizens who look to Bladen Community College for lifelong learning opportunities.

The Curriculum Instruction Planning Unit shall encourage curriculum faculty to continually upgrade their professional development and maintain new techniques and technologies in their respective areas of expertise on a continuing basis in order to provide effective and innovative instruction via a variety of delivery methods.

The Curriculum Instruction Planning Unit shall provide quality of associate degree, diploma, and certificate programs upon which individuals can build, expand, or complete their educational goals toward careers in business, industry, public, and health services.

The Curriculum Instruction Planning Unit shall foster personal growth and life enrichment in students through classroom instruction and academic and job placement advising and shall prepare them to be better citizens in their communities.

The Curriculum Instruction Planning Unit shall provide its members opportunities for input on planning and future curriculum instruction personnel, facilities, curriculum programs, equipment and supply needs to meet the expected educational goals of the college.

The Curriculum Instruction Planning Unit shall foster diversity and cultural understanding among its members' interactions and curricular and extracurricular activities.

The Curriculum Instruction Planning Unit shall promote a positive and professional image of the college and shall support the mission of Bladen Community College and of the North Carolina Community College System.

**PO#1:** Upon completion of the Cosmetology program, at least 80% of the graduates taking the exam will pass and receive license from NC Cosmetic Arts Board.

**PO #2:** Graduates of the Cosmetology program will be technically proficient for entry level positions in this industry.

**PO #3:** Graduates will demonstrate proper sanitation and decontamination practices for the protection of themselves and their clients.

**Related to Institutional goal(s):**

1. To provide effective instruction to all who enroll; through curricula and programs that reflect existing and future needs within the assigned area of instruction.
2. To provide Associate in Applied Science, diploma, and certificate curriculum programs to prepare individuals for employment or provide skills upgrading or retrain for individuals already in the work force.
3. To provide occupational, general and specific interest courses that meet adult educational and community service needs.

**Person responsible:** Curriculum Cosmetology Instructors,  
(V. Guions, G. Warner, A. Lewis)

**Equipment cost:** N/A

**Salaries:** N/A

**Other cost:**

## Program Outcomes

## Assessment Sheet

**PO#1:** Upon completion of the Cosmetology program, **g**raduates will pass state board exams.

### **ASSESSMENT METHOD: (Method of Evaluation)**

- North Carolina State Board of Cosmetic Art exam pass rates will be used to determine student's technical proficiency.

### **CRITERIA FOR SUCCESS: (Successful Indicators)**

- 80% of graduates will score 70% or better on North Carolina State Board of Cosmetic Art exams.

### **ASSESSMENT RESULTS: (Findings)**

- 100% of the cosmetology graduates scored above 70 % on State Board exams.

### **USE OF RESULTS: (Improvements any action taken based on results)**

- Cosmetology graduates exceeded expectations. No action required. This outcome will be assessed annually.

## Assessment Sheet

**PO #2:** Employers of Graduates in the Cosmetology program will rate overall job performance of the graduates as satisfactory.

### ASSESSMENT METHOD: (Method of Evaluation)

- A survey completed through the IE office by the employers of the graduates will be used to assess student proficiency in entry level positions.

### CRITERIA FOR SUCCESS: (Successful Indicators)

- 80% of the students evaluated will meet the entry level position requirements of this industry.

### ASSESSMENT RESULTS: (Findings)

- 100% of the students met job entry level requirements (overall job preparation).

### USE OF RESULTS: (Improvements any action taken based on results)

- Student's job performance exceeded expectation. No action required. This outcome will be assessed annually.

## Assessment Sheet

**PO #3:** Graduates will demonstrate proper sanitation and decontamination procedures for the protection of themselves and the public.

### **ASSESSMENT METHOD: (Method of Evaluation)**

- Questions#1 on the Employer Survey administered annually by the IE office will be used to collect employer satisfaction data.

### **CRITERIA FOR SUCCESS: (Successful Indicators)**

- 80% of the employers were satisfied with graduates job related knowledge.

### **ASSESSMENT RESULTS: (Findings)**

- 100% of those responding to question #1 indicated on the survey that they were satisfied with the job related knowledge and that the graduates demonstrate proper sanitation / disinfection practices.

### **USE OF RESULTS: (Improvements any action taken based on results)**

- No action is necessary; the survey will continue to be conducted annually to track the satisfaction of graduates.

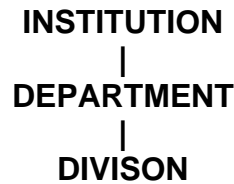


# **BLADEN COMMUNITY COLLEGE**

## **PROGRAM OUTCOMES AND ASSESSMENT RECORD 2006-2007**

**Early Childhood /Curriculum**  
**DEPARTMENT/DIVISION**

## MISSION STATEMENT LINKAGE



### INSTITUTIONAL MISSION STATEMENT

Bladen Community College is dedicated to the educational and cultural enrichment of the people of Bladen and surrounding counties. The college operates as a constituent to the North Carolina Community College system and is committed to opening the door to opportunity for citizens seeking to improve their lives and well being by providing:

- Education, training, and retraining for the workforce, including basic skills, literacy, occupational, and college transfer programs;
- Support for economic development through services to business and industry; and
- Services which improve the quality of life for individuals and for our community.

### DEPARTMENTAL MISSION STATEMENT Early Childhood

The Early Childhood Department shall provide a quality early childhood associate program to meet the existing and changing needs of students, employers, and the community in order to better serve ALL children, birth to eight years, with and without disabilities, and their families.

## **DIVISION MISSION STATEMENT**

### **DIVISIONAL MISSION STATEMENT**

The Curriculum Instruction Planning Unit shall provide quality curriculum programs to meet the existing and changing needs of students, the community, industry, local government, and all citizens who look to Bladen Community College for lifelong learning opportunities.

The Curriculum Instruction Planning Unit shall encourage curriculum faculty to continually upgrade their professional development and maintain new techniques and technologies in their respective areas of expertise on a continuing basis in order to provide effective and innovative instruction via a variety of delivery methods.

The Curriculum Instruction Planning Unit shall provide quality of associate degree, diploma, and certificate programs upon which individuals can build, expand, or complete their educational goals toward careers in business, industry, public, and health services.

The Curriculum Instruction Planning Unit shall foster personal growth and life enrichment in students through classroom instruction and academic and job placement advising and shall prepare them to be better citizens in their communities.

The Curriculum Instruction Planning Unit shall provide its members opportunities for input on planning and future curriculum instruction personnel, facilities, curriculum programs, equipment and supply needs to meet the expected educational goals of the college.

The Curriculum Instruction Planning Unit shall foster diversity and cultural understanding among its members' interactions and curricular and extracurricular activities.

The Curriculum Instruction Planning Unit shall promote a positive and professional image of the college and shall support the mission of Bladen Community College and of the North Carolina Community College System.

## Program Outcomes

1. Employees of graduates will rate the skills of these employees as average or above average.
2. Students of the Early Childhood Department will successfully complete Early Childhood Credentials I & II or EDU 119.
3. Increase the number of teachers/providers in early care and education programs in the community with at least an associate degree by 5%

### **Related to Institutional goal(s):**

1. To provide effective instruction to all who enroll; through curricula and programs that reflect existing and future needs within the assigned area of instruction.
2. To provide Associate in Applied Science degree, diploma, and certificate curriculum programs to prepare individuals for employment or to provide skills upgrading or retraining for individuals already in the workforce.
3. To provide occupational, general, and specific interest courses that meet adult educational and community service needs.
4. To provide opportunities through collaborative relationships with other institutions and agencies to enhance educational services to the community at large.

### **Person responsible:**

1. Thelma Cain
2. Claudia Anderson

**Equipment cost: \$ N/A**

**Salaries: \$ N/A**

**Other cost: \$ N/A**

## ASSESSMENT SHEET

**PO#1:** Employees of graduates will rate the skills of these employees as average or above average.

### ASSESSMENT METHOD (Method of Evaluation)

- Employer Survey

### CRITERIA FOR SUCCESS (Successful Indicators)

- 80 % of employers would say that they were satisfied with the overall job preparation.

### ASSESSMENT RESULTS (Findings)

- 100% of employers were satisfied with BCC's over job preparation of graduates.

### USE OF RESULTS (Improvements or any actions taken based on results)

- 100 % of employ were satisfied with this outcome. We will continue to monitor this objective. No action necessary.

# ASSESSMENT SHEET

**PO #2:** Students of the Early Childhood Department will successfully complete Early Childhood Credentials I & II or EDU 119.

## ASSESSMENT METHOD (Method of Evaluation)

- Course grade reports will be used to evaluate number of students who successfully complete course and qualify for the NC Early Childhood Credential.

## CRITERIA FOR SUCCESS (Successful Indicators)

- 70% of students taking EDU 119 will achieve a C or better as required to qualify for the NC Early Childhood Credential from the NC Division of Child Development.

## ASSESSMENT RESULTS (Findings)

- 80% of students taking EDU 119 achieved a C or better as required to qualify for the NC Early Childhood Credential from the NC Division of Child Development.

## USE OF RESULTS (Improvements or any actions taken based on results)

- Outcome met. Not action required. However, results will be used to make curriculum decisions and course planning and revision.

## ASSESSMENT SHEET

**PO #3:** Increase the number of early childhood distance learning or off-site courses offered in the community to improve accessibility to the early childhood professionals.

### ASSESSMENT METHOD (Method of Evaluation)

- Utilize course schedules for distance (online & hybrid) as well as off-site EDU courses.

### CRITERIA FOR SUCCESS (Successful Indicators)

- Will increase the number of students being served in these courses by at least 10%

### ASSESSMENT RESULTS (Findings)

- Number increased from 6 (fall 2003/spring 2004) to 21 in fall 2006 and spring 2007 an increase of 250%.

### USE OF RESULTS (Improvements or any actions taken based on results)

- Will use results to guide decisions on course scheduling, site locations and other factors affecting accessibility.